



Grade Reports



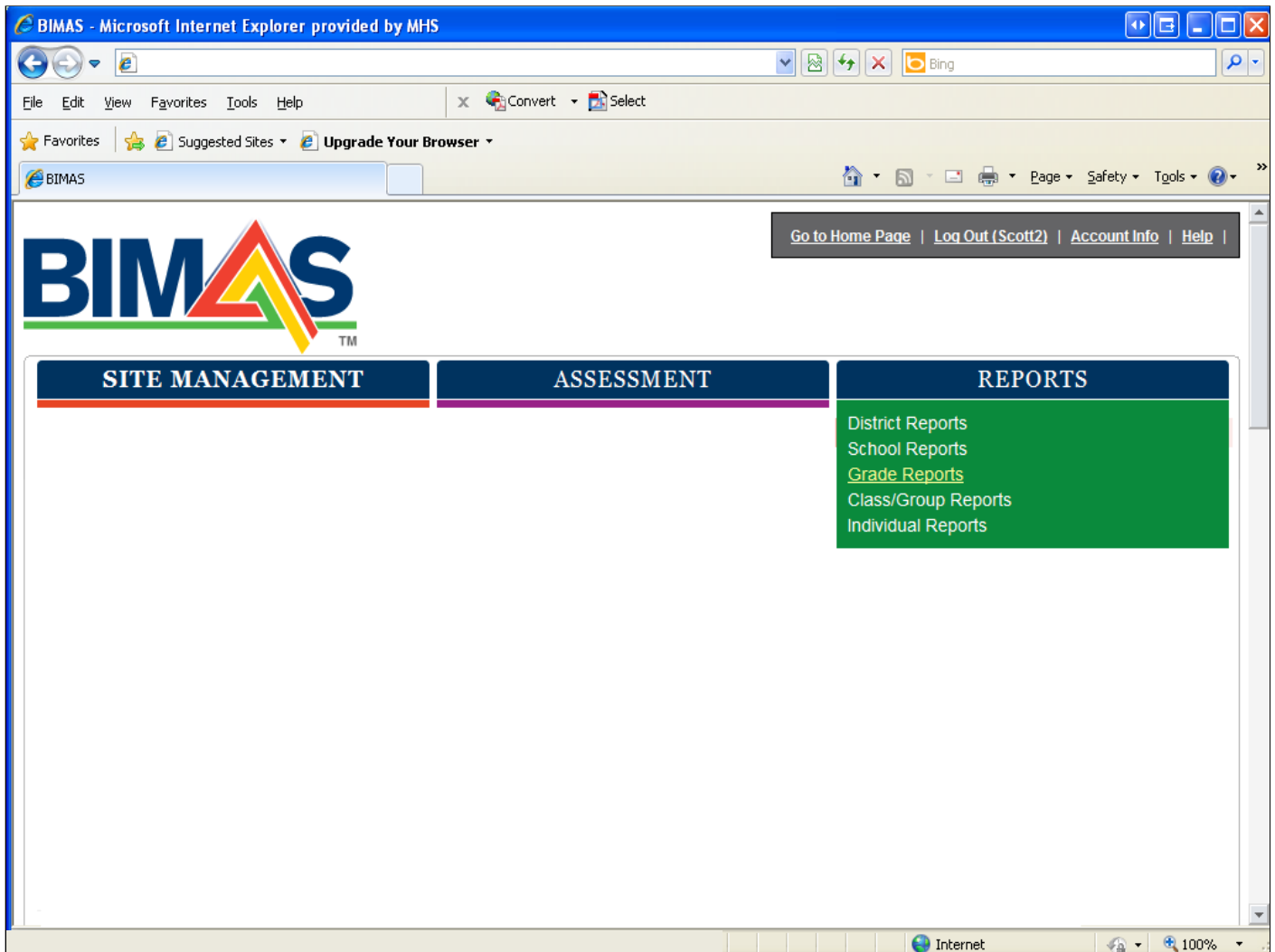
Copyright © 2011 Multi-Health Systems Inc. All rights reserved.
No part of this document may be reproduced by any means without
permission from the publisher.
In the U.S.A., P.O. Box 950, North Tonawanda, NY 14120-0950
In Canada, 3770 Victoria Park Avenue, Toronto, ON M2H 3M6

Reports at the **Grade** level consist of assessment information for students in several classes within the same grade.

Before generating a Grade report, Universal Assessments must be conducted in more than one class, for the desired grade, using the BIMAS Standard.

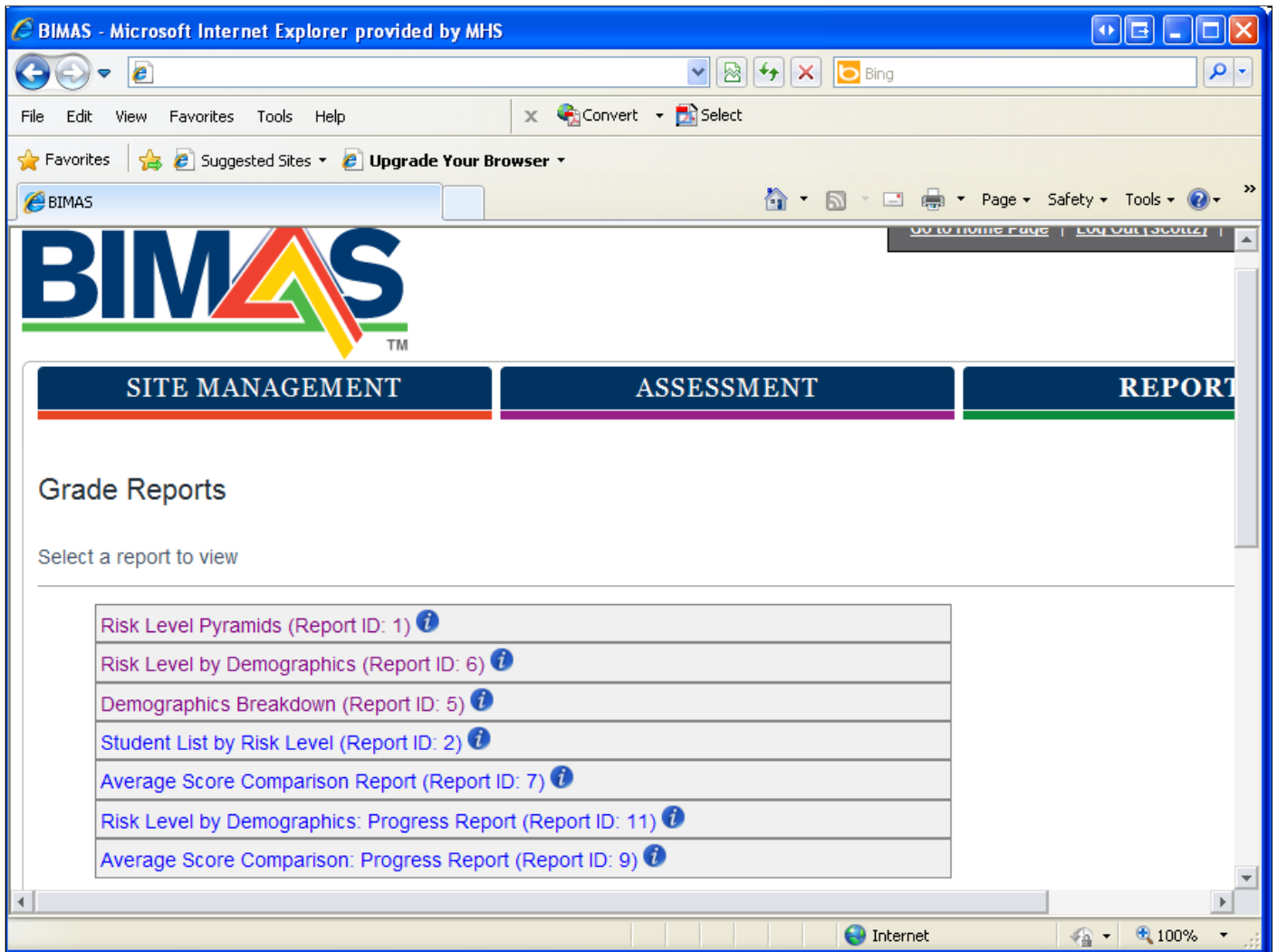
To generate a Grade report:

1. Click **Reports**.
2. Select **Grade Reports**.



Click on the report you would like to generate:

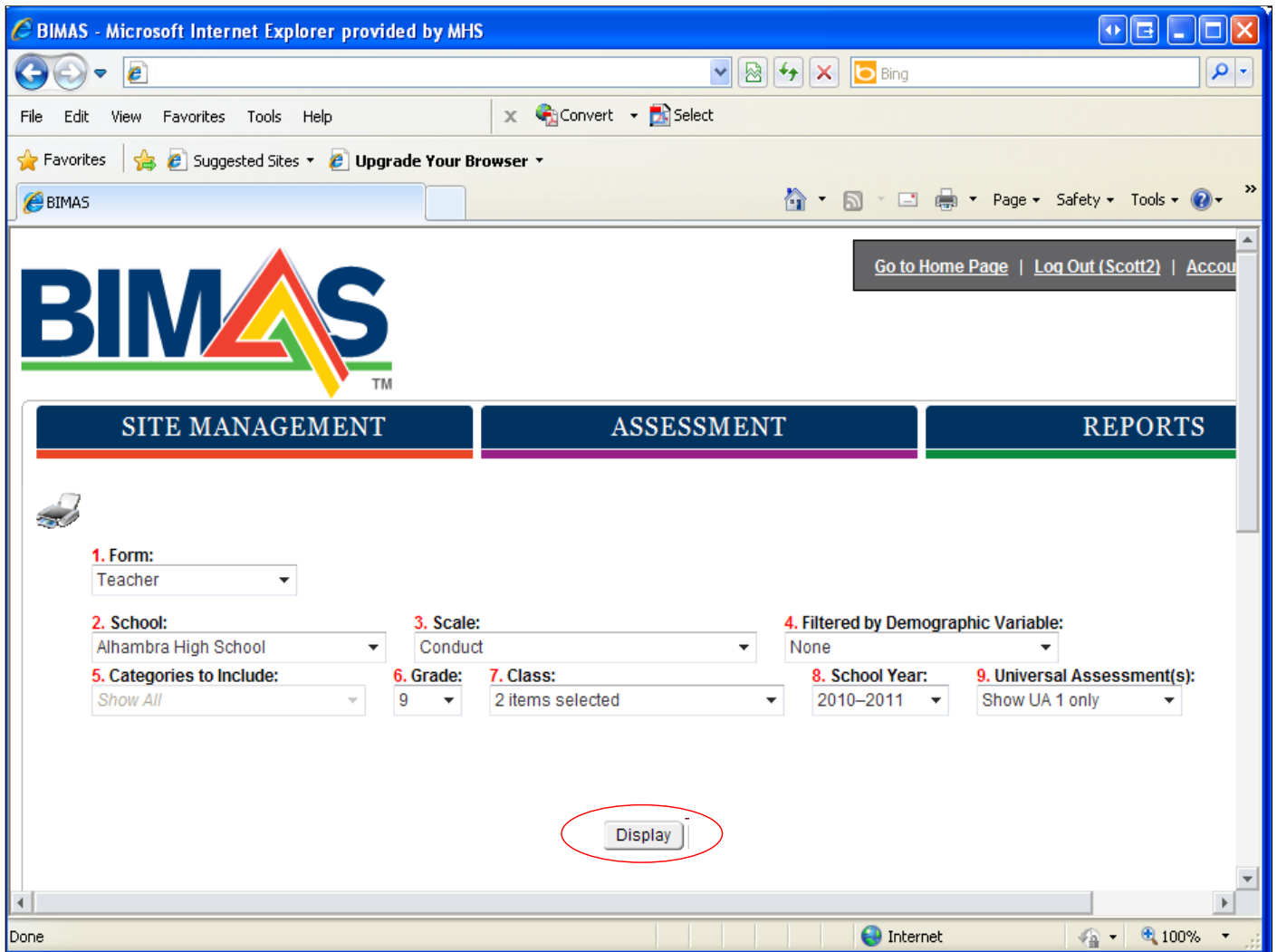
- **Risk Level Pyramids**– Shows risk level percentage in a pyramid graph for one Universal Assessment
- **Risk Level by Demographics**–Displays the percentage of students within each risk level by demographic variable
- **Demographics Breakdown** – Displays the percentage/number of students according to demographic variable
- **Student List by Risk Level** – Lists the names of all students scoring at each risk level
- **Average Score Comparison Report** – Compares the group average results between classes within a grade
- **Risk Level by Demographics: Progress Report** – Compares the percentage of students within each risk level by demographic categories across Universal Assessments or school years
- **Average Score Comparison: Progress Report** – Compares the group average results across time between classes within a grade



To generate any Grade report, fill in the fields under that category using the drop-down boxes. A grade must be selected.

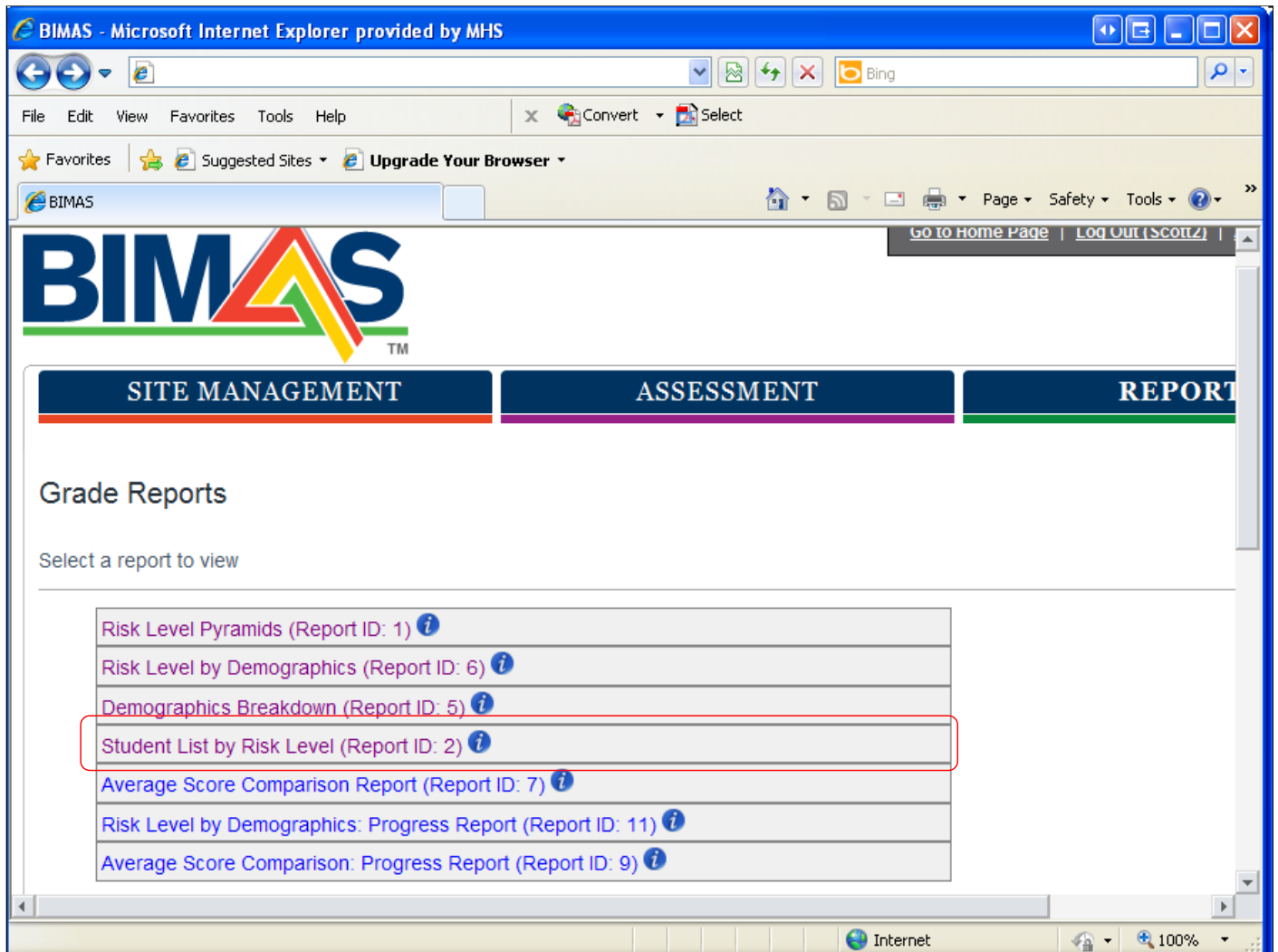
Classes are not categorized into particular grades on the system. Only students are set up within grades. When you select a grade, your report will include all the students from different classes, but within the selected grade.

Click **Display**. The report will appear under the Display button.



The following is an example of how to generate a **Student List by Risk Level** report.

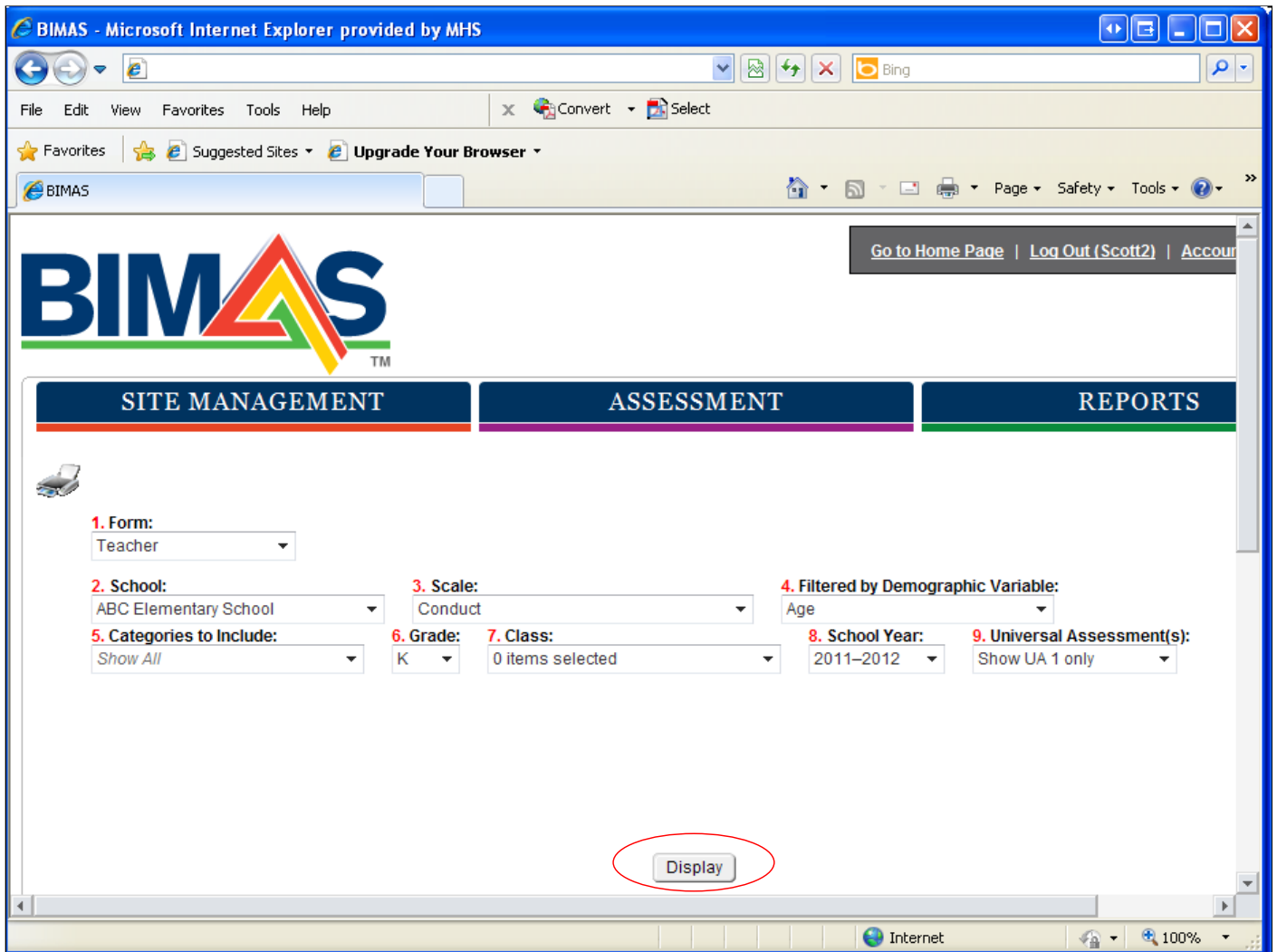
Under **Grade Reports**, select **Student List by Risk Level**.



Complete the following fields using the drop-down menus:

- **Form**
- **School** (District-level users only)
- **Scale**
- **Demographic Variable** to filter the report by (optional)
- **Demographic Variable Categories to Include**
- **Grade**
- **Class**
- **School Year**
- **Universal Assessment(s)**

When all the fields have been filled, click **Display**.



The **Student List by Risk Level** report is generated.

If you would like to see a **Standard Individual Assessment** report of a student for the selected Universal Assessment, click on a **Student Name**.

**Student List by Risk Level
BIMAS™-Teacher Standard**

Springfield School District
MacDonald Elementary
2010-2011

Universal Assessment(s): 1
Grade(s): 4
Class(es): All
Filtered by Demographic Variable: None

Click on student name to view the student's BIMAS Standard Individual Assessment Report for the selected Universal Assessment.

Conduct Scale

In Prog Monitor = In Progress Monitoring at time of assessment ● = Yes ○ = No

High Risk Group (T-score = 70+) in Universal Assessment 1		
Universal Assessment 1		
Student Name	T-score	In Prog Monitor
Farrah, Colleen	83	●
Klumming, Heather	81	●
Nathanson, Andy	71	●
Some Risk Group (T-score = 60-69) in Universal Assessment 1		
Universal Assessment 1		
Student Name	T-score	In Prog Monitor
Deppe, Joey	63	○
Lola, Jojo	69	●
Taylor, Dudley	63	○
Low Risk Group (T-score < 60) in Universal Assessment 1		
Universal Assessment 1		
Student Name	T-score	In Prog Monitor
Black, Juliana	57	○
Chan, Christina	55	○
Fernandez, Jose	57	○
Fong, Gary	46	○
Platt, Ken	57	○
Pratt, Beverly	55	○
Sakamoto, Catherine	57	○

A **Standard Individual Assessment** report for the selected student will be generated in a new window.

For information on how to interpret the report, refer to the *BIMAS Technical Manual*.

**Standard Individual Assessment Report
BIMAS™-Teacher Standard**

Springfield School District
MacDonald Elementary

Student: Colleen Joanne Farrah
Gender: Female
Age: 10
DOB: 02/03/2001
Grade: 4
Class: 4A
Rater: T: Mrs. Sally Lopez
Date of Assessment: 12/9/2010
Universal Assessment: 1

Behavioral Concern Scales: T-scores

Higher scores indicate MORE concerns.



Before you print any report, ensure that you have your printer properly configured through your internet browser.

To set up your printer:

1. Open up your internet browser.
2. In your printer setup options, select **Print Background Colors and Images**.
3. Click **OK**.

You only need to set up your printer once. This setting will now apply to all reports you print.

